

**12<sup>th</sup> World Telecommunication/ICT Indicators Symposium  
(WTIS-14)**

**Tbilisi, Georgia, 24-26 November 2014**



---

***Presentation***

**Document C/21-E  
25 November 2014**

**English**

**SOURCE:** e-Government Center, Moldova

**TITLE:** Moldova's experience with Open Data Initiative

# Moldova's experience with Open Data Initiative



**Livia Turcanu**

Product platform consultant

E-Government Center Moldova

[livia.turcanu@egov.md](mailto:livia.turcanu@egov.md)

Tbilisi, November 25th, 2014



# STARTING THE JOURNEY



**WORLD BANK** as the main donor driver for Open Governance and Open Data

## **THE GOVERNMENT OF MOLDOVA**

enabling and aligning OD and OD-based innovations to the legal and institutional framework

## 2010-2011

Strong commitments and political support



## date.gov.md

The screenshot displays the homepage of the date.gov.md portal. At the top, there is a navigation bar with the text 'Guvernul Republicii Moldova' and 'Portalul Guvernamental al Datelor Deschise'. Below this, a search bar contains the text 'Căutare site'. The main content area features a large white box with the number '782' and the text 'seturi de date (3358 resurse)'. To the right of this box is a search input field with the placeholder text 'Căutare seturi de date'. Below the search bar, there is a list of categories: 'sănătate (88) • instituții medico-sanitare publice (56) • spital (55) • infracțiuni (23) • școli (19) • Camera de Licențiere (17) • forță de muncă (14) • elevi (14) • cheltuieli (14) • buget (13) • cultură (13)'. At the bottom left, there is a yellow banner for 'Biroul Național de Statistică al Republicii Moldova'. At the bottom right, there is a green box titled 'Noutăți' containing a list of news items with dates and titles.

-782 datasets

- Open Data publication Methodology

- A network of 30+ OD focal points

- 19 open data Apps on the portal

- 160,838 downloads in 2014

# First Steps towards Open Data



April

May

June

July

December

2011

Launch of the portal

Launch of BOOST

Portal User's Manual

TechCamp

Prime Minister's Directive  
(Institutionalization of ODI)

Hans Rosling

Launch of Apps Contest

V 2.0 portal launched



# Open Government Action Plan Consultations



**List of public government data to be open in 2012 – consulted with civil society**



**Open Data Catalogues of Central Public Institutions**



# Open Innovation Week, May 2012



date.gov.md  
Portalul datelor deschise



open  
development  
technology  
alliance



World Bank  
Institute



Data Journalism Bootcamp  
BOOST training  
Open Government Day  
Apps for Moldova  
Open Data Knowledge Exchanges



# WHAT Government Data to Open?

Priority



Information systems  
(Structured data)

Manually collected data  
(Data in Word, Excel)

Q	R	S	T	U	V	W	X	Y
111	Retribuire	47924500	17686577	3044855	2514814	2921870	4777697	4427340
111	Retribuire	413000	31593.21	0	0	0	11320.48	20272.73
112	Contributi	10584100	4025049	693061.7	573224.7	667313.6	1093442	998006.7
112	Contributi	9500	267.48	0	0	0	2604.75	4662.73
113	Plata marf	28018.3	7755.2	22720.5	9978	1915086	1873592	
113	Plata marf	59200	78956.6	0	0	9075	10441.74	60508.67
114	Deplasari	5220200	1232676	156612.3	189395.6	77635.55	444394.1	364638.8
116	Prime de	1609800	612507.5	105465.9	87279.85	101547.7	166393.4	151870.6
116	Prime de	11000	25.55	0	0	0	0	709.55
132	Transferuri	21910	25.55	0	0	0	0	0
135	Transferuri	5173400	1002594	14118.04	185757.9	227162.4	223979.1	351576.4
136	Transferuri	7000	0	0	0	0	0	0
242	Procurare	476900	16820	0	16	0	0	0
111	Retribuire	89000	26398	43588	4238	2638	4483	636115.7
112	Contributi	1729200	596806.2	100249.8	95630.35	154768.1	101606	144551.5
113	Plata marf	3975000	294565.7	0	199216.1	32083.54	28685.56	34580.45
113	Plata marf	10000	0	0	0	0	0	0
114	Deplasari	2260000	0	0	0	0	2600	22488
116	Prime de	263200	91000	0	0	23551.03	15461.85	21996.97
135	Transferuri	529100	171973.6	0	25328.31	44517.8	27385.13	74742.35
242	Procurare	2268000	7599.2	0	0	0	0	7599.2
111	Retribuire	22208600	6875089	1096460	1115385	1204398	1340241	2118605
112	Contributi	4988000	1568824	252185.8	254537.6	275240.5	303827.9	483032.2
113	Plata marf	6856800	937013	5490.05	177047	216976.9	202729.1	334770

Sectorial data

KPI data

Sectorial data

KPI data

Paid data?

Integrate through API

Data Structure Guide  
to ensure easy reuse

5 ★ Open Data

New Open Data Portal  
CKAN and Drupal  
Launched in Feb 2014

# Open Data Applications



Open Procurement



Open Budget Spending



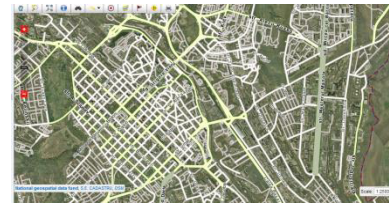
Open Foreign Aid



Open Legislation



Open National Statistics



Open Geoportal



# Latest progress



February

May-June

August

2014


[www.date.gov.md](http://www.date.gov.md)  
Version 0.3

Public consultations on:

- Open Data concept
- Open Data publication methodology


**Open data as default policy  
for the Government of Moldova**

# Legal Framework


 Law nr. 982-XIV from 11.05.2000 on **access to information**


 Law nr. 305 on **public sector information reuse**

 Government Decision nr. 886 from 08.11.2013 on the approval of **Methodological norms on applying Law nr. 305 on public sector information reuse**

 Open Data License

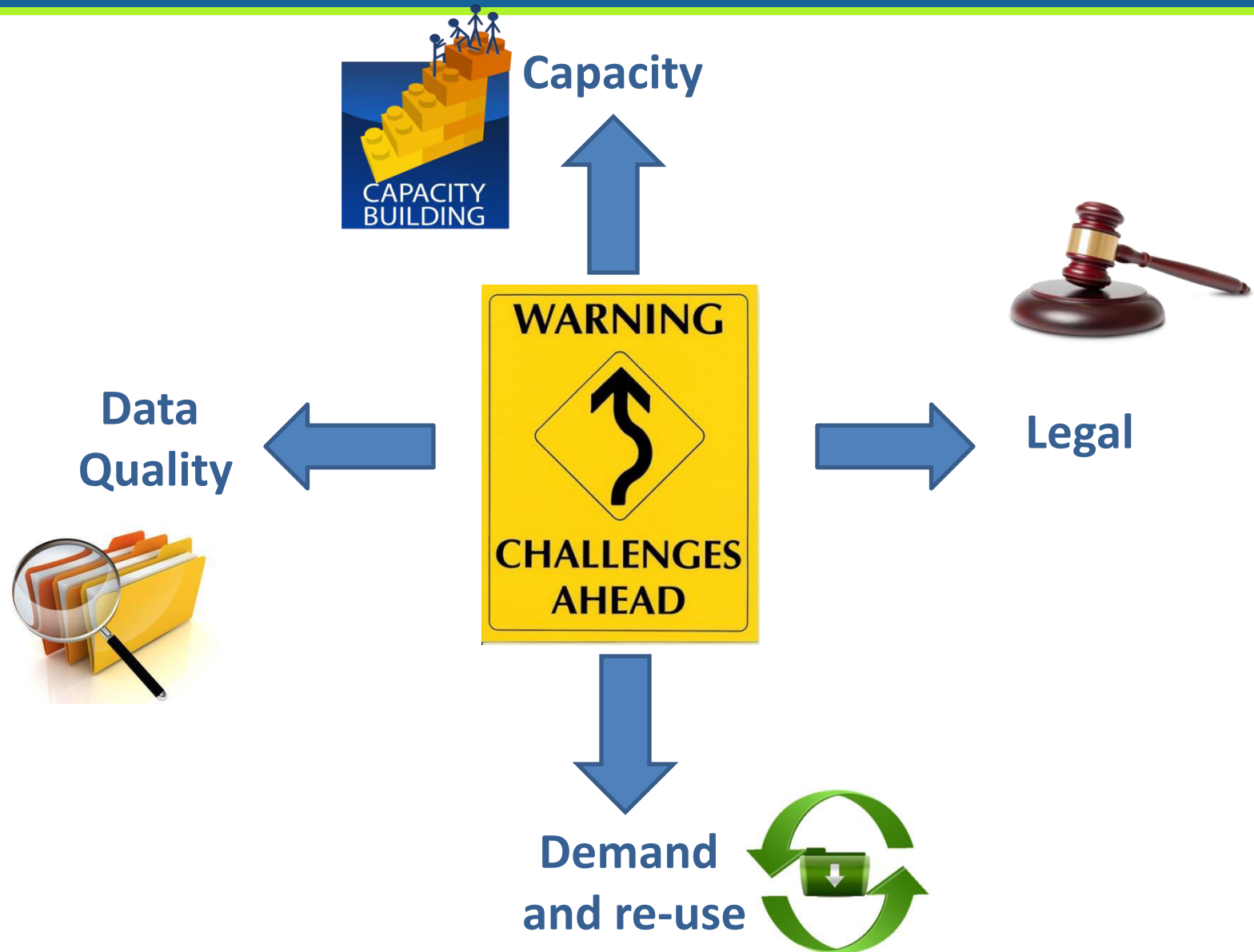
 Government Decision nr. 133 from 08.07.2011 on **personal data protection**

 Government Decision nr. 700 from 25.08.2014 on the approval of **Open Data Policy** (outlining the principles of open data)

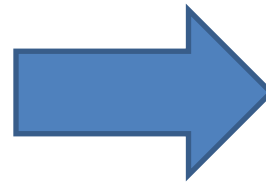
 Government Decision nr. 701 from 25.08.2014 on the approval of **Open data publishing methodology**



# OPEN DATA CHALLENGES IN MOLDOVA



## Open data quality



Has multiple dimensions and it is more than data correctness: accuracy, availability, completeness, relevance, validity, timeliness, processability, etc.



## **Purpose:**

to create a regulatory framework on the open data principles applied nation-wide and define the minimum open data requirements

# OPEN DATA PRINCIPLES

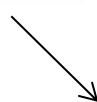
- ✓ Opening up data implicitly and proactively
- ✓ Protecting sensitive data
- ✓ Opening up primary data
- ✓ Availability online
- ✓ Publishing timely data
- ✓ Publishing data in open and automatically processable formats
- ✓ Accurate and representative metadata
- ✓ Publishing bulk data



# DATA QUALITY CHALLENGES



Information systems  
(Structured data)



Sectorial data

KPI data

Q	R	S	T	U	V	W	X	Y
ol	art_name	precizat	executat	executat0	executat0	executat0	executat0	executat0
111	Retribuire	47924500	17686577	3044855	2514814	2921870	4777697	4427340
111	Retribuire	413000	31593.21	0	0	0	11320.48	20272.73
112	Contributi	10584100	4025049	693061.7	573224.7	667313.6	1093442	998006.7
112	Contributi	99100	667.48	0	0	0	2604.75	4662.73
113	Plata marl	2801100	13995.21	0	0	0	1915086	1873592
113	Plata marl	592000	71958.21	0	0	0	10441.74	60508.67
114	Deplasari	5220200	1232676	156612.3	189395.6	77635.55	444394.1	364638.8
116	Prime de	1609900	612507.5	105465.9	87239.85	101547.7	166393.4	151870.6
116	Prime de	1400	0	0	0	0	0	709.55
132	Transferui	2100	0	0	0	0	0	0
135	Transferui	5173400	1002594	14118.04	185757.9	227162.4	223979.1	351576.4
136	Transferui	7000	0	0	0	0	0	0
242	Procurare	476900	16920	0	0	0	0	0
111	Retribuire	19200	129098	13588	42100	6130	4130.2	636115.7
112	Contributi	1729200	596806.2	100249.8	95630.35	154768.1	101600	144551.5
113	Plata marl	3975000	294565.7	0	199216.1	32083.54	28685.56	34580.45
113	Plata marl	10000	0	0	0	0	0	0
114	Deplasari	2260000	0	0	0	2600	0	22488
116	Prime de	263200	91100	0	0	23551.03	15461.85	21996.97
135	Transferui	529100	171973.6	0	25328.31	44517.8	27385.13	74742.35
242	Procurare	2268000	7599.2	0	0	0	7599.2	0
111	Retribuire	22208600	6875089	1096460	1115385	1204398	1340241	2118605
112	Contributi	4988000	1568824	252185.8	254537.6	275240.5	303827.9	483032.2
113	Plata marl	6856800	937013	5490.05	177047	216976.9	202729.1	334770

Manually collected data  
(Data in Word, Excel)



Sectorial data

KPI data

# CHALLENGES WITH DATA QUALITY

- The need of a standardized and centralized data collection mechanism
- Difficulty in handling the data collection process in the regions
- The need of standardized procedures for data collection in the public authorities – > **open by design**



# OPPORTUNITIES

## **Information management systems:**

*Examples:* Ministry of Education, Ministry of Health, Ministry of Environment, etc.

Better quality data from priority sectors

## **Increased feedback from data users :**

Will help increase the open data quality by pointing to concrete issues in the datasets

## **Interoperability platform:**

*Examples:* MConnect, Government Interoperability Platform of Moldova

# Thank You for your attention!



**Facebook** – Date Guvernamentale  
Deschise

**Twitter** – @OpenGovMD  
@DateDeschiseMD



**Livia Turcanu**

@livia\_turcanu  
Livia.turcanu@egov.md