



**ITUWRS**  
ONLINE2020

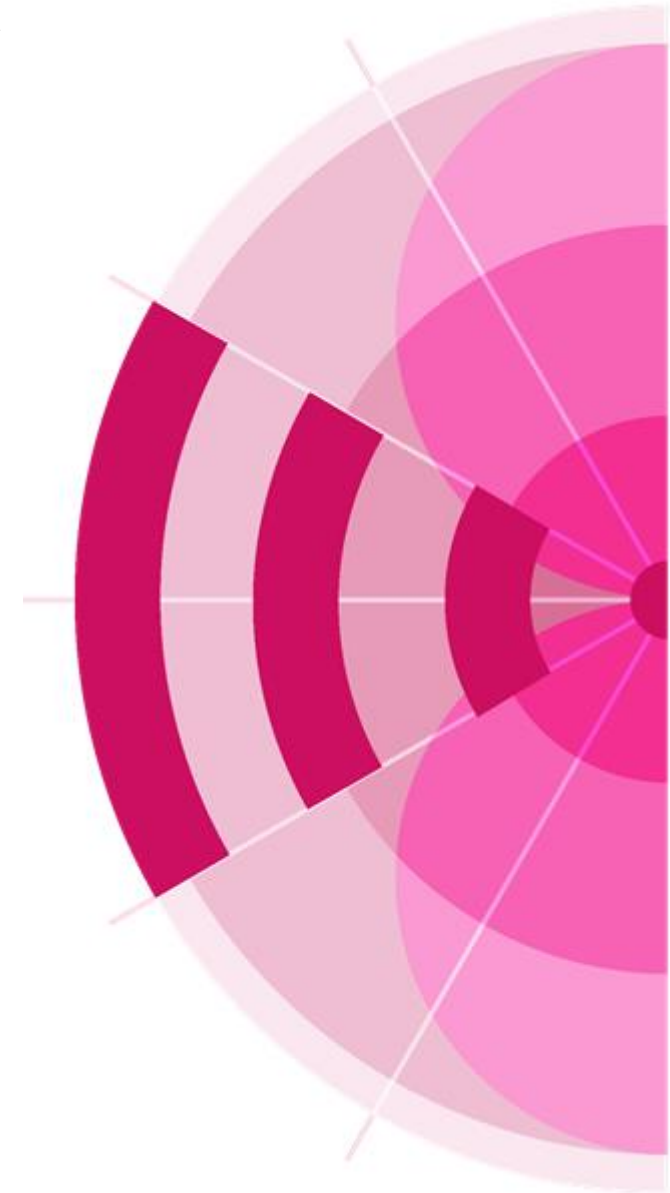
29<sup>TH</sup> WORLD RADIOCOMMUNICATION SEMINAR  
30 November - 11 December 2020

# Notification of frequency assignments for recording in the Master Register and Plans

Ms. Sujiva Pinnagoda  
Terrestrial Services Department  
Radiocommunication Bureau

[www.itu.int/go/wrs-20](http://www.itu.int/go/wrs-20)

#ITUWRS



# Overview

## Master International Frequency Register (MIFR)

- ✓ Database of frequency assignments that are already in operation;
- ✓ Why it is necessary to register;
- ✓ Type of frequency assignments that must be registered;
- ✓ When to register.

## Terrestrial Plans – Regional or Worldwide

- ✓ Database of frequency assignments that are planned for administrations for their future use;
- ✓ Must notify to the Master Register when put into operation.

# Notification

International Recognition No. 8.3

In accordance with the RR

Notification ?

**Software to create, validate and send**

TerRaNotices – Create Notices  
Online Validation – Validate  
WISFAT – Send to BR

**Practical information**

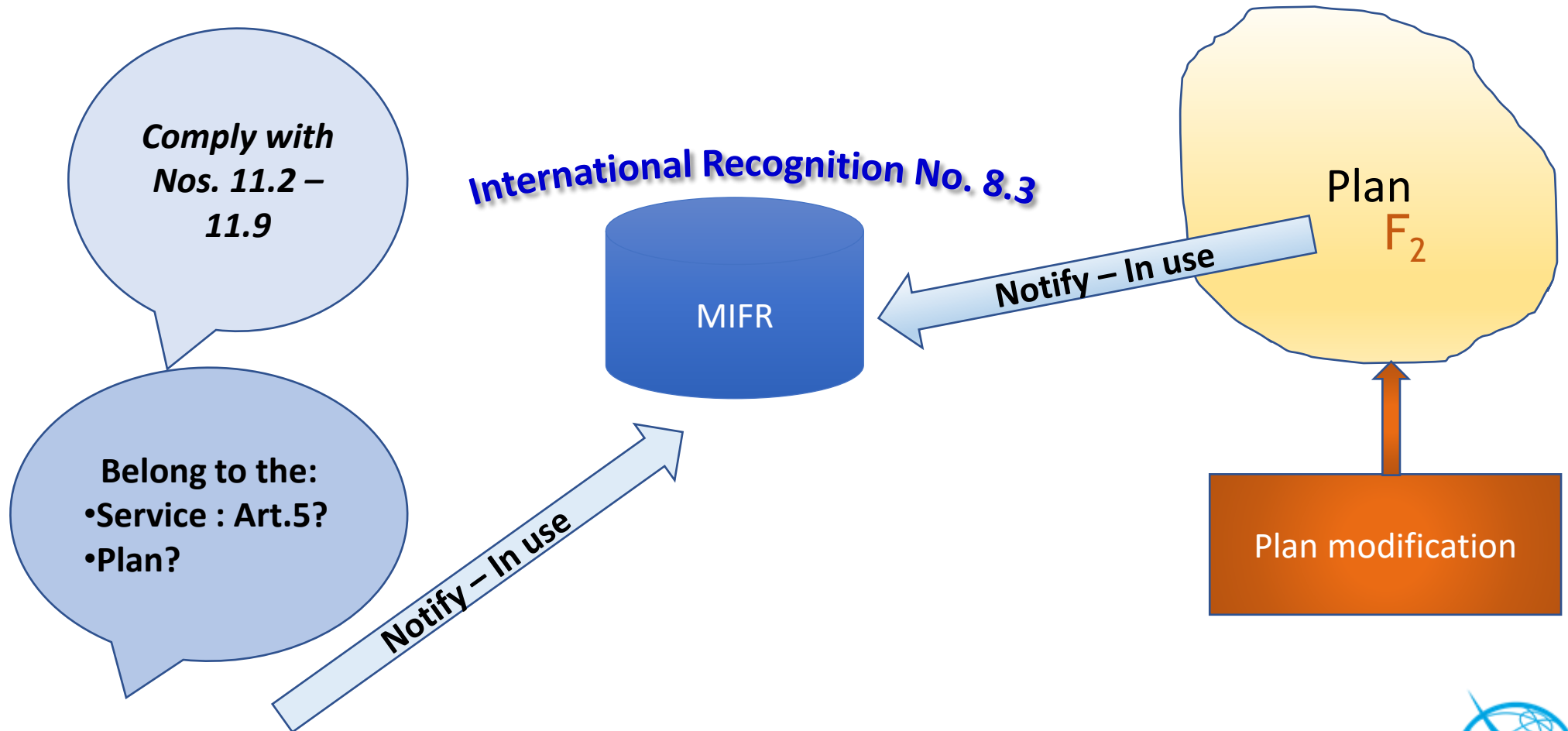
Preface to the BR IFIC  
Guidelines

**Regulatory information**

Radio Regulations (Art. 11;  
Art. 9, App.4, Regional  
Agreements; RoP)



# Principal of the notification procedures for recording in the Master Register (MIFR)



# Notification under Art.11

## **NOTIFIED** (Nos. 11.3 – 11.9)

- ✓ Capable of causing harmful interference to any service of another administration;
- ✓ Used for International radiocommunication;
- ✓ Subject to world/regional frequency allotment/assignment plan which does not have its own notification procedure;
- ✓ Subject to the Art. 9 coordination procedure;
- ✓ Request for international recognition
- ✓ For information only (RR 4.4).

## **NOT BE NOTIFIED** (Nos. 11.13 – 11.14)

- × Assignments to stations in the amateur service;
- × Assignments to ship stations and to mobile stations of other services
- × Assignments involving specific frequencies which are prescribed by RR for common use – as they are already in the Master Register

# Notification to the Bureau (1/3)

## ➤ What to Notify?

✓ For the recording of a frequency assignment in the Master Register:

Administrations shall provide the relevant characteristics listed in Appendix 4 to the RR (No. 11.15).

✓ For the modification of a given Plan:

Administrations shall provide the relevant characteristics listed in the Annexes of the relevant Agreement.

✓ Preface to the BR IFIC:

Symbols and codes are defined for some data items, such as:

❖ Class of station, Nature of service, etc.;

<http://www.itu.int/en/ITU-R/terrestrial/brific/Pages/default.aspx>

# Notification to the Bureau (2/3)

## ➤ When to notify?

- ✓ For the recording in the **Master Register (MIFR)**, the notices shall reach the Bureau (Nos. 11.24 – 11.26A):
  - Not earlier than three years before the assignment is brought into use, for terrestrial stations involved in coordination with a satellite network and for high altitude platform stations operating as a base station to provide IMT;
  - Not earlier than five years before the assignment is brought into use, for assignments to high altitude platform stations in the fixed service;
  - Not earlier than three months before the assignment is brought into use, for all other terrestrial stations;
- ✓ To modify the Plan:
  - Can be sent any time when required.

# Notification to the Bureau (3/3)

## ➤ How to notify?

- ✓ Prepare a notice for each frequency and for each station;
- ✓ Unless the same frequency is re-used with the same technical characteristics many times within a given area:
  - ❑ A single notice: with the typical characteristics of one station of the network (RR11.17);
    - ❖ Does not apply to all services or to all frequency bands (Nos. 11.18 – 11.21B):
      - ❖ Stations covered by Allotment Plans in App. 25, App.26 and App.27;
      - ❖ Broadcasting stations;
      - ❖ Terrestrial stations within the coordination area of an earth station, etc.



# Notices: Grouped by categories

**LFMF**

Low and medium frequency bands for sound broadcasting  
**T03 and T04**

**FMTV**

VHF and UHF frequency bands for sound and television broadcasting  
**T01, T02, GS1, GT1, GS2, GT2, GB1, GA1**

**FXM**

Fixed, mobile and other terrestrial services  
**T11, T12, T13, T14, T15, T16, T17, G11, G12, G13, G14**

# Electronic notice file format

```
<HEAD>
t_adm=HNG
</HEAD>
```

```
<NOTICE>
t_ <NOTICE>
t_ t_n <NOTICE>
t_ t_d t_notice_type=T12
t_ t_fr t_d_adm_ntc=2010-11-26
t_ t_fr t_fragment=NTFD_RR
t_ t_st t_freq_assgn=128.1500
t_ t_pr t_station_id=AIR AMBULANCE
t_ t_ac t_prov=RR11.2
t_ t_ct t_adm_ref_id=SF22125
t_ t_si t_ctry=HNG
t_ t_d t_site_name=BUDAORS
t_ t_is t_d_inuse=2010-08-01
t_ t_na t_is_resub=False
t_ t_ac t_nat_srv=OT
t_ t_op t_addr_code=A
t_ t_ac t_op_agcy=006
t_ t_st t_action=ADD
t_ t_er t_stn_cls=FD
t_ t_b t_emi_cls=A3EJN
t_ t_lo t_bdwidth_cde=6K00
t_ t_la t_long=+0185956
t_ t_op t_lat=+465959
t_ t_op t_op_hh_fr=00:00
t_ t_op t_op_hh_to=24:00
```

```
<ANTENNA>
t_ <ANTENNA>
t_ t_ <ANTENNA>
t_ t_ t_pwr_xyz=Z
t_ t_ t_pwr_ant=7
t_ t_ t_pwr_dbw=4.8
t_ t_ t_pwr_eiv=E
t_ t_ t_ant_dir=ND
t_ t_ <RX_STATION>
t_ t_ t_geo_type=CIRCLE
t_ t_ t_long=+0185956
t_ t_ t_lat=+465959
t_ t_ t_radius=300
t_ t_ </RX_STATION>
t_ t_ </ANTENNA>
</NOTICE>
```

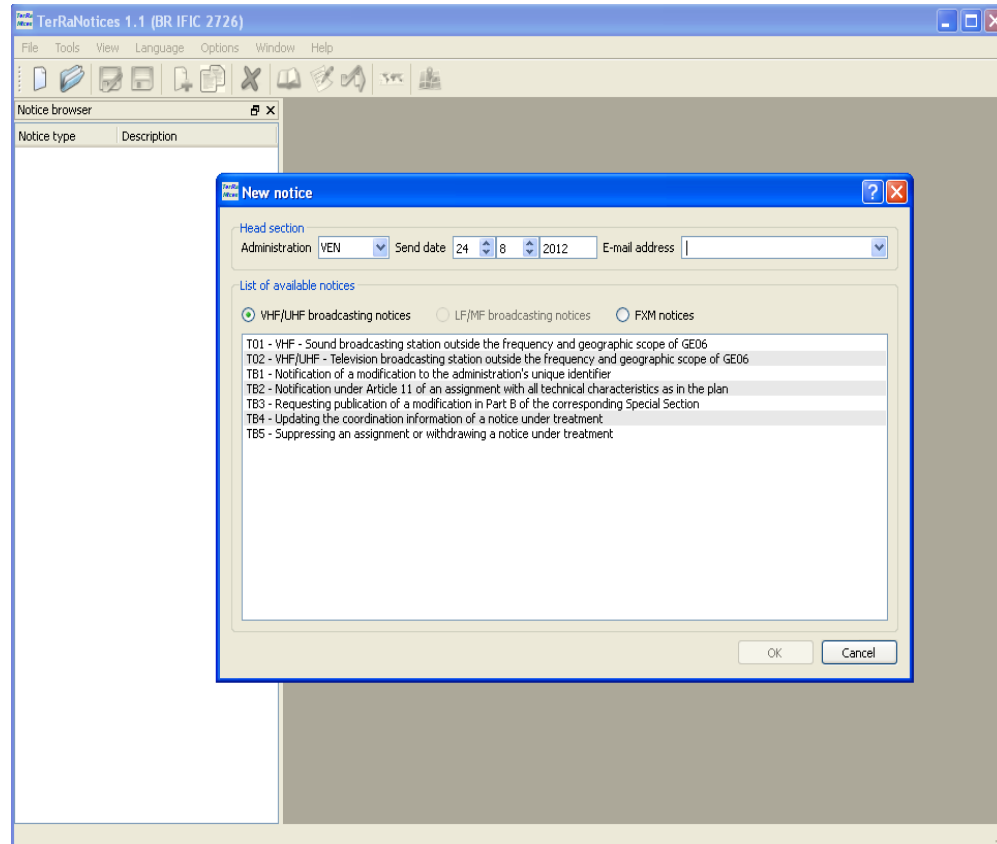
```
<TAIL>
t_num_notices=3
</TAIL>
```

- ❑ Notices must be sent electronically to the BR, to comply with Res. 906 (Rev. WRC-15):
- ❑ Structured text file in which more than one notice can be sent

<http://www.itu.int/en/ITU-R/terrestrial/tpr/Pages/Notification.aspx>

Additional information with examples of different notice types

# Create a notice file : TerRaNotices



## ✓ Online validation tool:

- Deep validation such as checking the frequency band, geographical coordinates, potential duplicate notices, etc.
- Validation is done in batch mode so once the validation is completed the user is notified via an e-mail
- Available for all ITU Username having TIES Services at:

<http://www.itu.int/ITU-R/terrestrial/OnlineValidation/Login.aspx>

# Submission to the BR - WISFAT

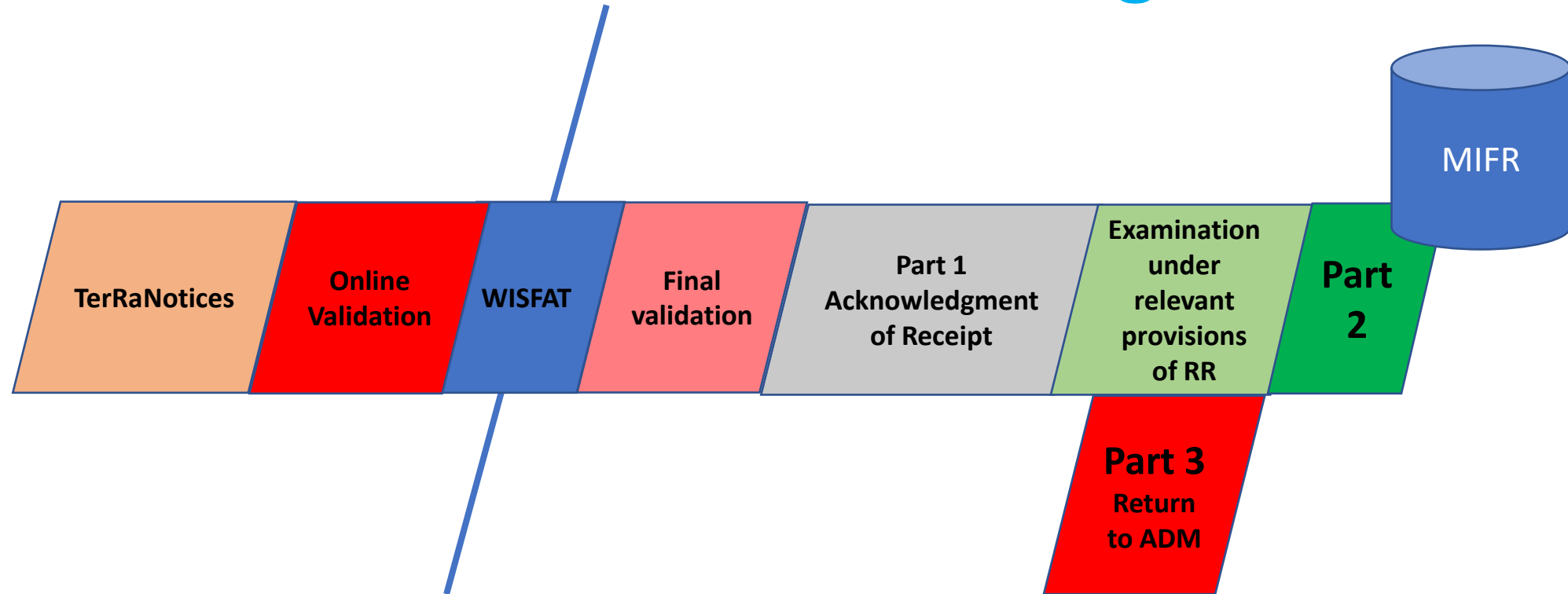
## ➤ How to submit the notices to the Bureau?

- ✓ WISFAT (Web Interface for the Submission of Frequency Assignments/Allotments for the Terrestrial Services) - Immediate acknowledgement report to the notifier;

<http://www.itu.int/go/WISFAT>

- ✓ Secured web Interface accessible only registered users;
- ✓ Official e-mail request (brmail@itu.int) must be sent to the BR from the administration:
  - Name, position, service e-mail, ITU Username (having TIES services);
- ✓ As many as required;
- ✓ Administration's responsibility to keep this notifiers database up to date;

# Overview of the Processing : MIFR



*Nos: 11.27 – 11.34*

# Final Remarks

- Notification has two aspects:
  - ❑ Administration's obligation to apply the provisions of the Radio Regulations as it is an international treaty signed by all ITU Member States;
  - ❑ To claim for international recognition and rights.
- Remember: **Master Register must reflect** the exact use of the radio spectrum in your territory;
- It also reflects the use of various frequency bands, this information is also taken into consideration during World Radiocommunication Conferences (WRCs), when services are looking for new allocations;
- Consult the BR IFIC to be aware of what is happening with regards to the use of the international radio spectrum by your neighboring countries.

Therefore, **notification to the Bureau is very important**

# Thank you!

ITU – Radiocommunication Bureau

Questions to [brtpr@itu.int](mailto:brtpr@itu.int) or [pinnagoda@itu.int](mailto:pinnagoda@itu.int)

